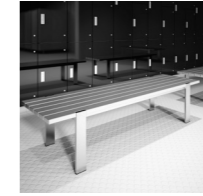




thrislington cubicles

LEISURE



IT'S TIME TO STOP PLAYING AROUND

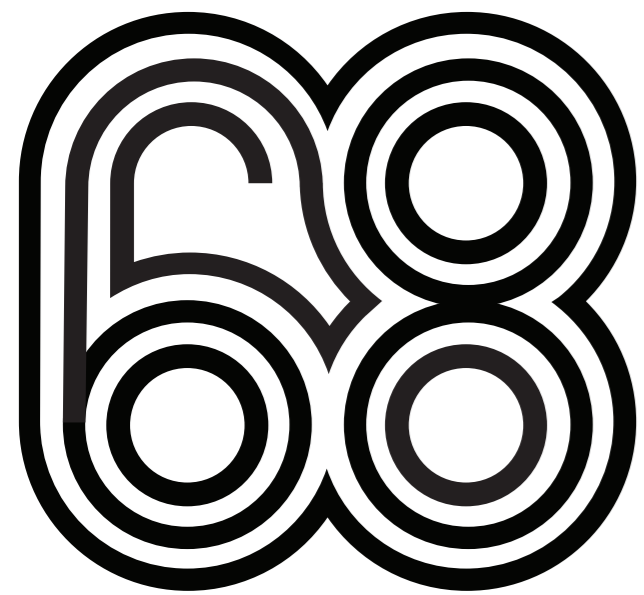
Thrislington have been the last word in washrooms and cubicles for the last 50 years and now we're targeting the leisure market.

We've further developed our award winning cubicle systems for the unique challenges created in gyms and changing rooms.

A new freestanding island unit has been created and we now offer vanity units, lockers and seating – making us a one stop shop for all your changing room needs.



OUR CORE STRENGTHS



track record

In 1968 Thrislington was born, the same year as the Summer Olympics in Mexico. During the games, Dick Fosbury won the gold medal and broke the Olympic high jump record by clearing 2.24 metres. What was most remarkable about this, was his unique back-first technique, since known as the 'Fosbury Flop', which although scorned at first, is still the most popular jumping technique to this day. In 1968, like Thrislington, Dick Fosbury changed the face of his chosen field forever.



the perfect fit

There's another reason, aside from the supreme design and manufacturing as to why our cubicles last so long – our installation team, some of whom have been working for Thrislington for over 25 years.

something for everyone

Our systems are all designed to work with each other from entry level to the highest specification. This means that there will be a design perfect for any leisure project, whatever the budget.



lasts a lifetime

We know leisure centres, we know how much wear and tear burly sportsmen and excited children can cause to a changing area. Despite this knowledge, we are still offering our unique 10 year manufacturing guarantee.

We also have extensive after sales and maintenance support, ensuring that our products will stay the distance (even if everything else doesn't!)

record of achievement

We've got all of our badges (and a fair few awards) and we're proud of them. Have a look at the inside back cover of this brochure to check them all out...

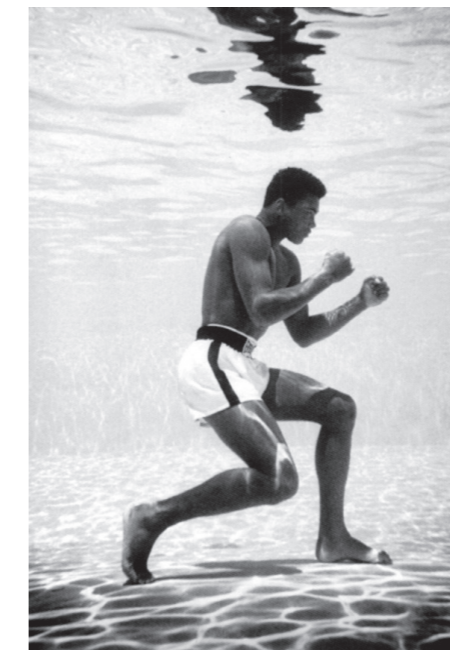


a little extra...

We've an extensive range of leisure ancillaries listed online at: www.thrislingtonleisure.com

enjoy the silence

Unlike other changing and toilet cubicles, our doors have soft-closers built in, which are noise reducing. This not only means there is less noise to contend with, it also means the door shuts with a remarkably satisfying heavyweight feel.



OUR RANGE

FREESTANDING	area	zone	budget	materials
oasis	Changing	Wet - Dry	●●●	Glass or compact grade laminate with stainless steel fixings and aluminium frame.
icon	Changing	Wet - Dry	●●	Glass or compact grade laminate with aluminium fixings and frame.
polo	Changing	Wet - Dry	●	Compact grade laminate with painted fixings and powder coated aluminium frame.

LOCKERS

fusion glass	Changing	Wet - Dry	●●●	Glass with aluminium frame and body.
fusion wood	Changing	Dry	●●●	Wood veneer with aluminium frame and body.
fusion laminate	Changing	Wet - Dry	●●	Compact grade laminate with aluminium frame and body.
fusion metal	Changing	Wet - Dry	●	Mild steel face, frame, and body.

CUBICLES

oasis	Changing, Toilets, Showers	Wet - Dry	●●●	Glass, stainless steel, aluminium, wood veneer compact, grade or high pressure laminate with stainless steel fixings and aluminium frame.
icon	Changing, Toilets, Showers	Wet - Dry	●●	Glass, aluminium, compact grade or high pressure laminate with aluminium fixings and aluminium frame.
polo	Changing, Toilets, Showers	Wet - Dry	●	Compact grade or high pressure laminate with painted fixings and powder coated aluminium frame.

SEATING	area	zone	budget	materials
disc	Changing	Wet - Dry	●●●	Glass-reinforced plastic with resin structural support.
slat	Changing, Showers	Wet - Dry	●●	Stainless steel structure with polyethylene or extruded aluminium slats.
bench	Changing, Showers	Wet - Dry	●	Hard wood or compact grade laminate slats with a powder coated mild steel framework.

VANITY UNITS

trough	Changing, Toilets, Showers	Wet - Dry	●●●	Solid surface.
slab	Changing, Toilets, Showers	Wet - Dry	●●●	Solid surface, glass or concrete.
semi-recessed	Changing, Toilets, Showers	Wet - Dry	●●	Solid surface, compact grade or high pressure laminate.
countertop	Changing, Toilets, Showers	Wet - Dry	●●	Solid surface, compact grade or high pressure laminate.

PANELS

sentry	Changing, Toilets, Showers	Wet - Dry	●●●	Glass, stainless steel, aluminium, wood veneer, compact grade or high pressure laminate.
hung panels	Changing, Toilets, Showers	Wet - Dry	●	Wood veneer, compact grade or high pressure laminate.

Our range is made up of Good, Better, Best. We don't show it like this, as we believe that until your good is better, and your better is best, then you haven't experienced Thrislington Cubicles. Please see www.thrislingtonleisure.com for further information on all our products. All product details correct at time of going to print.

FREESTANDING UNITS

Our new freestanding unit has been developed specifically for leisure centres and changing rooms.

The unique, patented anchor system provides the strength required for such a unit, whilst the typical Thrislington design provides the beauty.

Available in our Oasis, Icon and Polo ranges.



Our freestanding units are designed to withstand the heaviest of loads.

FREESTANDING UNITS



oasis freestanding unit in glass. **fusion** lockers in wood veneer.



oasis

A freestanding unit that floats. With stepped back stainless steel feet that make cleaning a breeze. Our top of the range, gold medal system not only looks beautiful but just like its cubicle counterpart, it contains our patented concealed hydraulic door closer, meaning that doors close quietly, slowly and beautifully.

FREESTANDING UNITS



icon

A freestanding unit with engineered aluminium foot and frame. It's available in both compact grade laminate and glass, which means it can perfectly complement any other Thrislington Leisure product. Simple, effective and ideal for any changing room, making it the ultimate team player.



icon freestanding unit in compact grade laminate. fusion lockers in compact grade laminate.

LOCKERS

Our Fusion locker system is designed to keep life as simple as possible. Its intelligent anti-vandal features not only make it tough, but it also looks the part, matching our freestanding and cubicle systems perfectly.

Available in fully bespoke sizes in glass, timber veneer, compact grade laminate and metal.

Super tough anti-vandal lockers with aluminium fixings will protect your valuables from attack.



LOCKERS



fusion

A locker system designed to perfectly complement the rest of the Leisure range. Glass works beautifully with our Oasis cubicle system and Disc seating but if your project has a tighter budget, Fusion is also available in compact grade laminate, still ideal for any wet area.



fusion lockers in glass. disc seating system in glass-reinforced plastic.

LOCKERS



fusion lockers in wood veneer. **bench** seating in compact grade laminate.



fusion z-lockers in compact grade laminate.

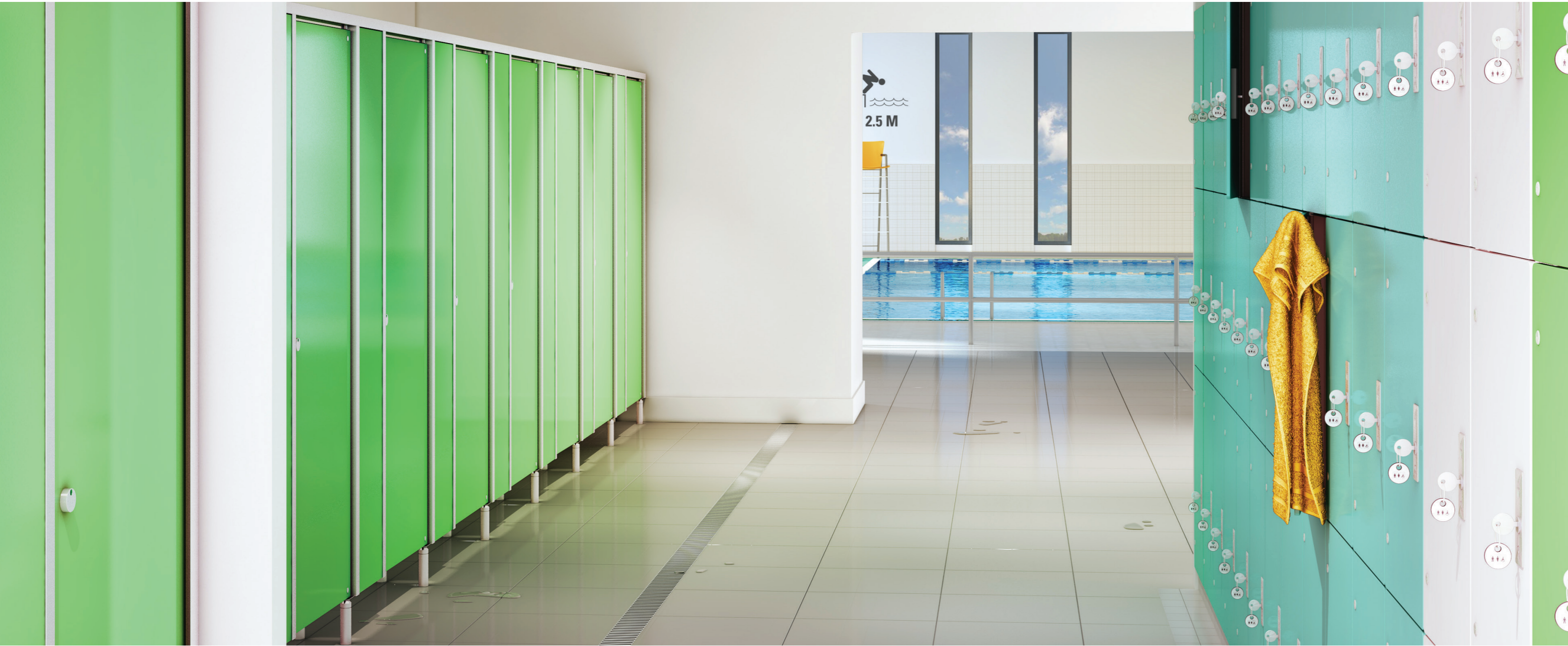
CUBICLES

We know it's impossible to keep changing rooms dry. We also know how important it is to keep them rust free. We've designed all our toilet, shower and changing cubicles to ensure they are rust resistant, no matter how much of a splash is made in the surrounding area.

With our water resistant cubicles, dive bombing is always allowed.



CUBICLES



icon shower cubicles in compact grade laminate. fusion lockers left hand hung, in compact grade laminate.



icon

With a full anodised aluminium frame, our Icon cubicle system has been winning fans in stadia and leisure centres around the world for many years, and now it's available in glass as well as compact grade laminate.

CUBICLES



polo toilet cubicles in compact grade laminate.



oasis shower cubicles in glass. slat seating in aluminium.

SEATING

Our range of seating has a product ideal for any gym or leisure centre. From our modern Disc system, our beautiful aluminium and stainless steel Slat seat, which perfectly complements our cubicles, through to our simple and effective Bench.



With our new seating systems, even the star players are happy to be benched.

SEATING

disc

Our modular Disc seating system is ideal for projects that not only demand a high level of design but also practicality. Constructed from super-tough glass-reinforced plastic with resin structural support, it is comprised of six elements, one basic module, two modules with a backrest and three modules with one, two or three crescent like shapes, enabling the ultimate bespoke finish.



disc seating system in glass-reinforced plastic. fusion lockers in compact grade laminate.

SEATING



bench seating in compact grade laminate. **fusion** lockers in compact grade laminate.



slat seating in aluminium. **fusion** lockers in glass.

VANITIES

We offer a diverse range of vanity units, from our standard high pressure laminate, to top of the range ceramic baked glass and concrete options.



It may come across as a little arrogant, but we think our vanity units look amazing.

VANITIES



slab vanities in prefabricated 19mm glass. **fusion** lockers right and left hung, in wood veneer.



slab

Prefabricated 19mm toughened glass with a kiln fused basin all supported by 10mm stainless steel brackets. Our glass unit is our gold medal vanity system.

VANITIES



trough vanity unit in solid surface. **fusion** lockers in compact grade laminate.



slab vanity unit in concrete.

PANELS

Our panels are tough and designed to survive the very wettest of areas.

Our standard hung panel system will be fit for any job, as will our bespoke urinal screens, whilst our top of the range Sentry system, which we've been installing for over 20 years, makes access a walk in the park.

Panels that hang perfectly.



PANELS



sentry panels in compact grade laminate, shown without urinal screen.



sentry

Our Sentry panels are hinged and lockable. This means that if cleaners require access, the panels can be unlocked and opened quickly and easily. It also means that people who shouldn't be getting access won't be able to. We've been installing Sentry for the last 20 years and although it's developed as time has gone on, the same principles remain. Available in glass, stainless steel, wood veneer, aluminium, compact grade laminate and high pressure laminate, it's a system that's proven to do the job, time and time again.

PANELS



sentry panels in wood veneer.



sentry panels in compact grade laminate.

cubicle and freestanding comparison chart

OASIS LOCK



Stainless Steel

Engineered 303 grade stainless steel lock, with concealed fixing through door.

Incorporating 16mm solid stainless steel bar, with replaceable hard nylon shear tip and emergency release facility.

Size ensures easy access for all users.

Lock locates directly into anodised aluminium framework.

Stainless steel brushed as standard. Polished stainless steel option available.

316 grade stainless steel available as optional upgrade.

ICON LOCK



Anodised Aluminium

Silver satin anodised lock.

Incorporating 16mm solid aluminium bar, with replaceable hard nylon shear tip and emergency release facility.

Size ensures easy access for all users.

Lock locates directly into matching anodised aluminium framework.

POLO LOCK



Painted Aluminium

Painted aluminium lock available in dark (RAL 7011) or light (RAL 7035) grey.

Incorporating 16mm solid aluminium bar, with replaceable hard nylon shear tip and emergency release facility.

Lock locates directly into matching powder coated aluminium framework.

Additional colour selection available as optional upgrade.

OASIS FOOT



Stainless Steel

Engineered 304 grade stainless steel foot.

Stepped back to give cubicles a floating appearance.

Locates directly into floor.

Recommended 80mm fitting into floor but can be reduced if underfloor heating in place.

Concealed height adjustment to ensure cubicles are perfectly in line, allowing for sloping floors.

Stainless steel brushed as standard. Polished stainless steel option available.

316 grade stainless steel available as optional upgrade.

ICON FOOT



Anodised Aluminium

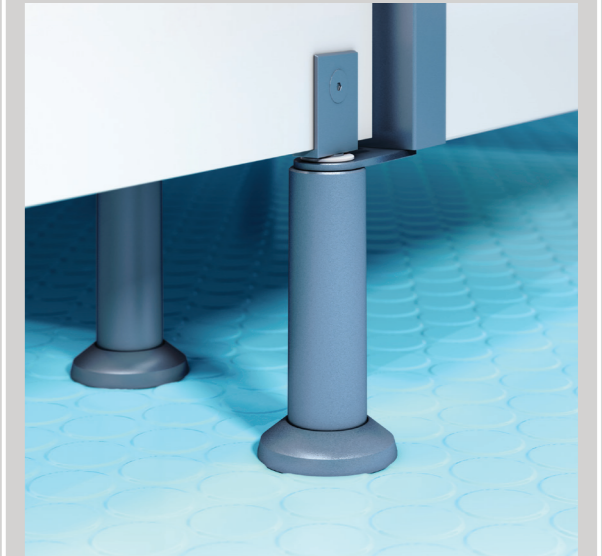
Engineered anodised aluminium foot.

Locates directly into floor.

Recommended 80mm fitting into floor but can be reduced if underfloor heating in place.

Concealed height adjustment to ensure cubicles are perfectly in line, allowing for sloping floors.

POLO FOOT



Powder Coated Aluminium

Powder coated aluminium foot available in dark (RAL 7011) or light (RAL 7035) grey.

Locates directly into floor.


Recommended 50mm fitting into floor but can be reduced if underfloor heating in place.

Shroud conceals fixing and height adjustment to ensure cubicles are perfectly in line, allowing for sloping floors.

Additional colour selection available as optional upgrade.

cubicle and freestanding comparison chart

OASIS FIXINGS




Stainless Steel

Door fixed to hydraulic closer and stainless steel lower pivot, using engineered stainless steel fittings.

Stainless steel brushed as standard. Polished stainless steel option available.

316 grade stainless steel available as optional upgrade.


ICON FIXINGS



Anodised Aluminium

Machined aluminium studs. 4mm solid aluminium brackets with flush allen key stainless steel through-fixings for wall, door and panel interfaces.


POLO FIXINGS



Powder Coated Aluminium

Extruded aluminium brackets with allen key head through-fixings for all wall, door, division and panel interfaces.

OASIS CLOSE



Hydraulic Closer

Door pivots between stainless steel lower pivot and hydraulic closer located in headrail.

Hydraulic closer not only ensures self-close but also makes it the smoothest closing door on the cubicle market.

ICON CLOSE



Sealed self-closing mechanism

Door pivots between foot and aluminium headrail with concealed self-closing mechanism located in foot.

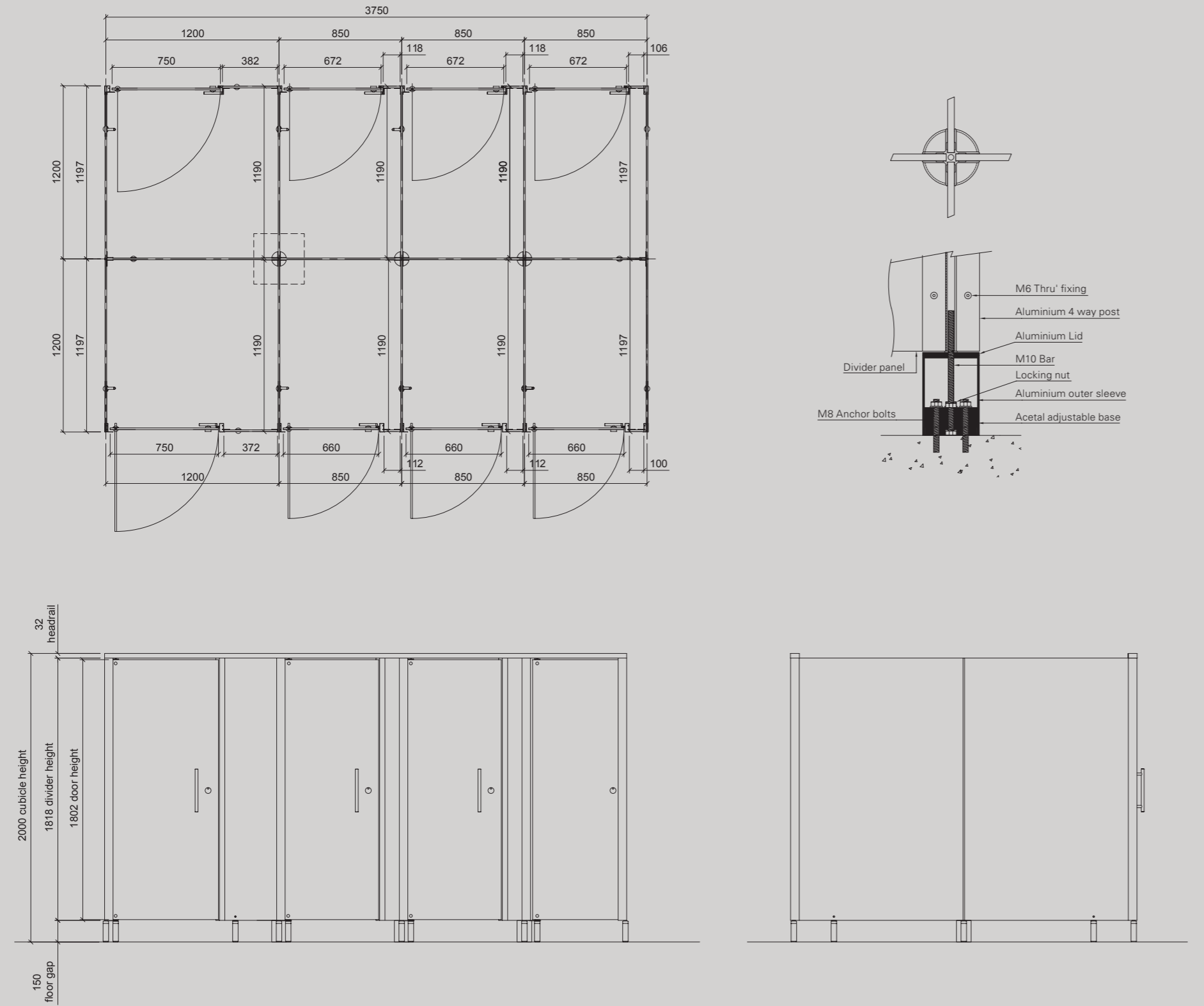
POLO CLOSE



Rise and Fall Mechanism

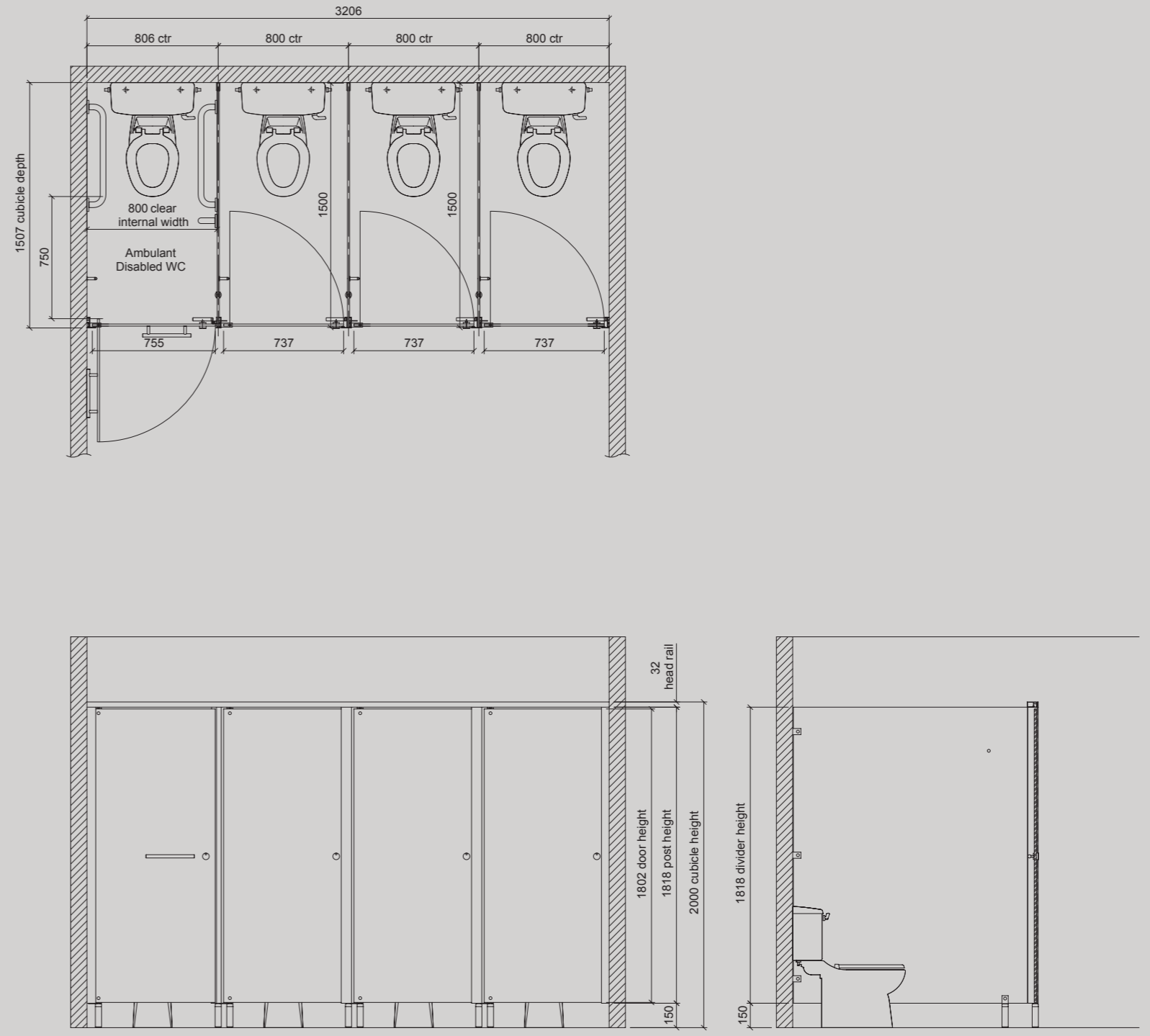
Door pivots between foot and aluminium headrail with rise and fall mechanism located in foot to ensure cubicle self-close.

FREESTANDING



Icon unit shown, other designs available. Not to scale

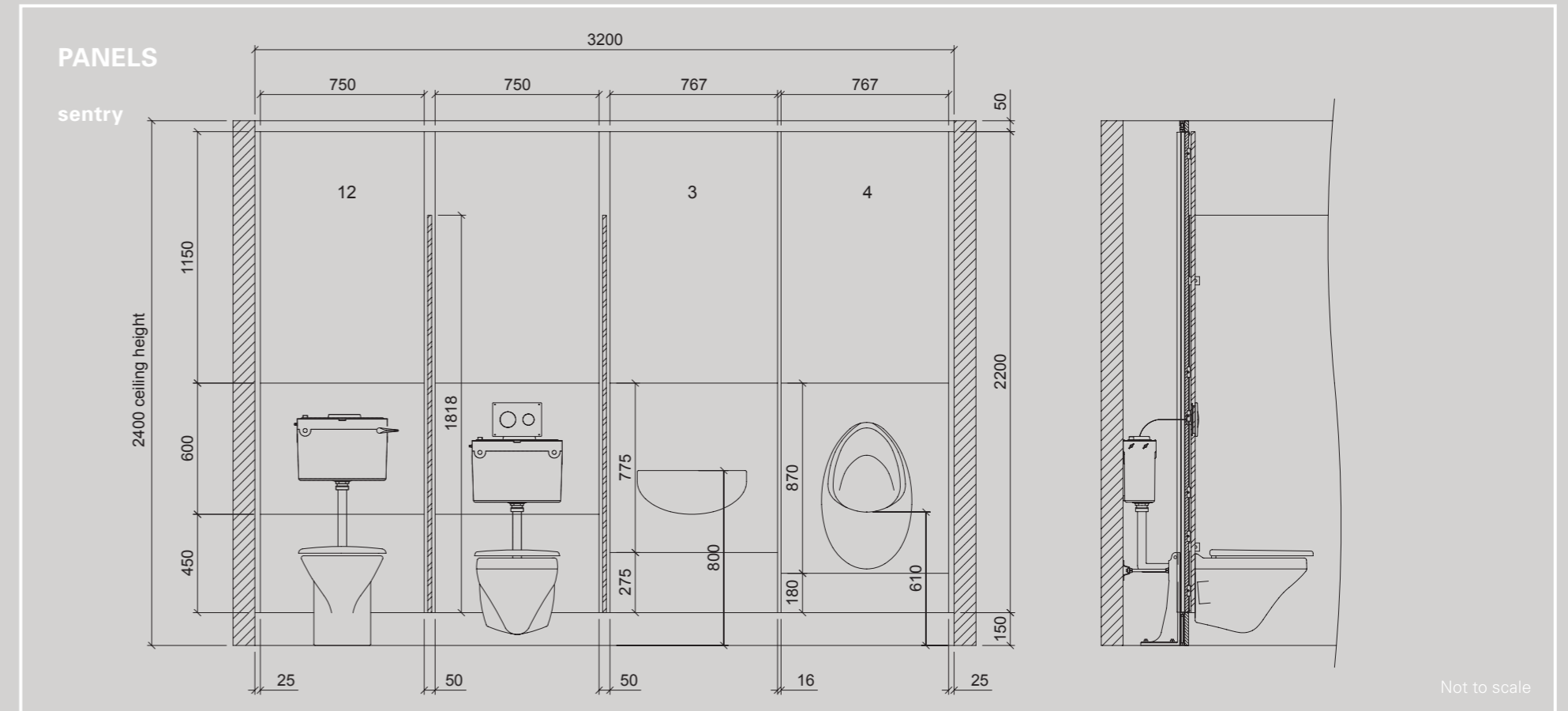
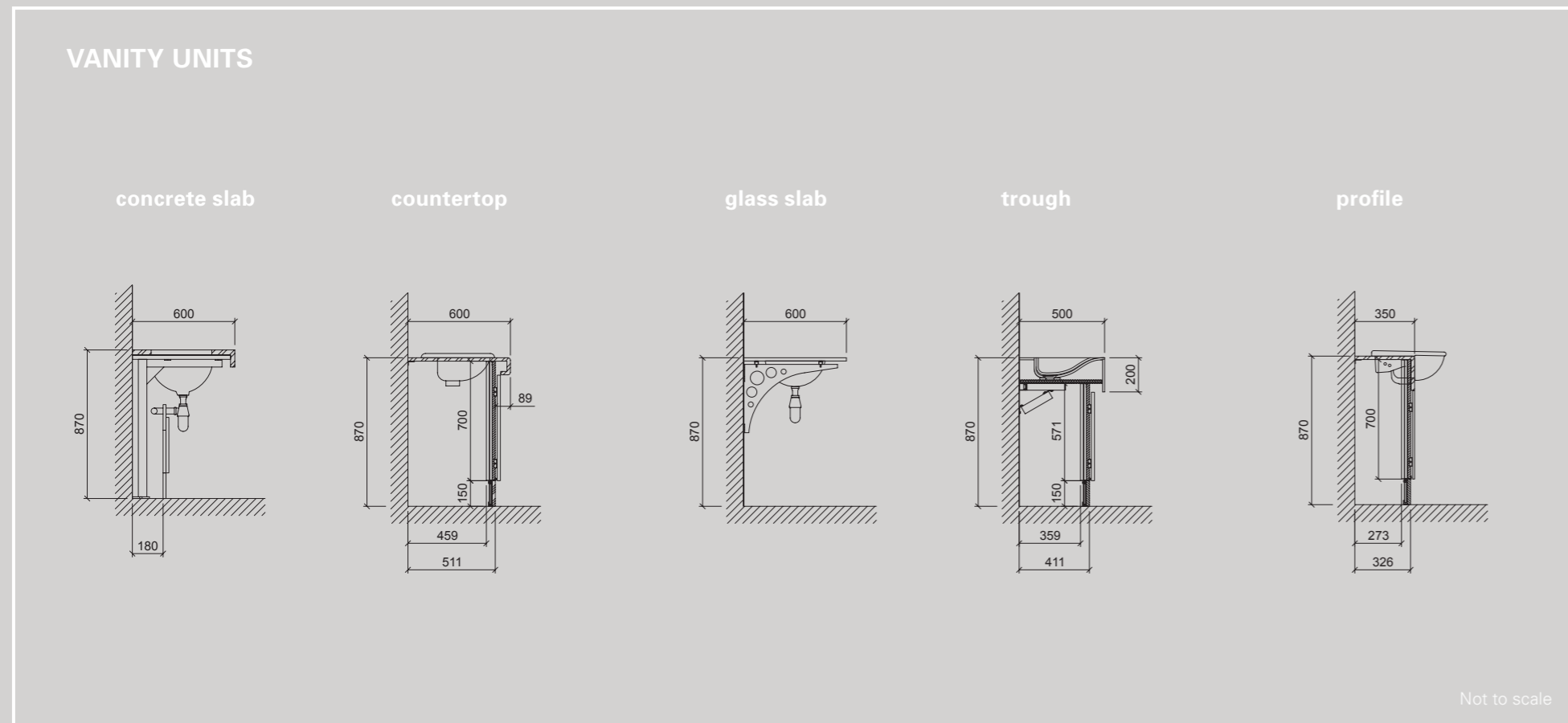
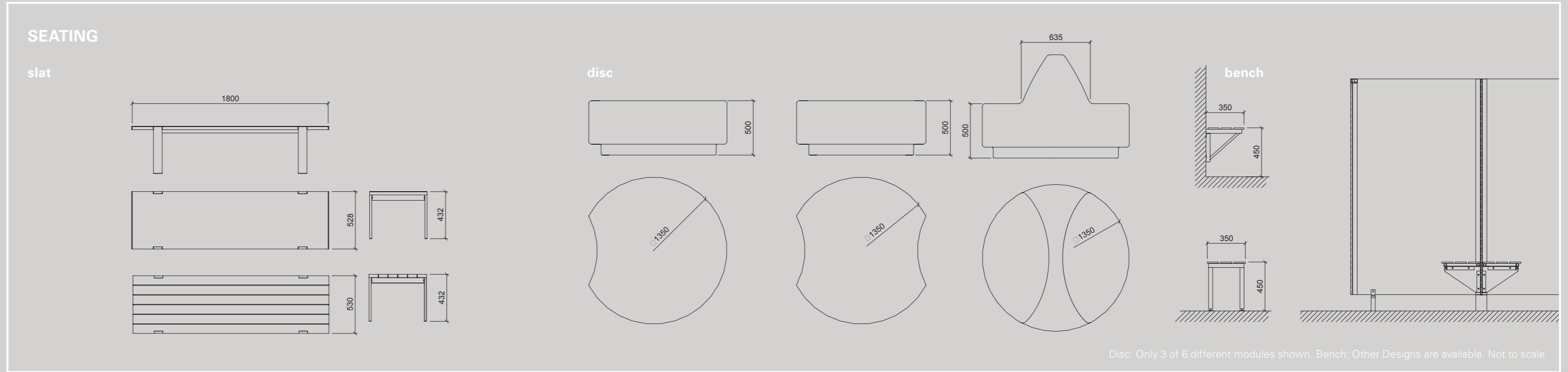
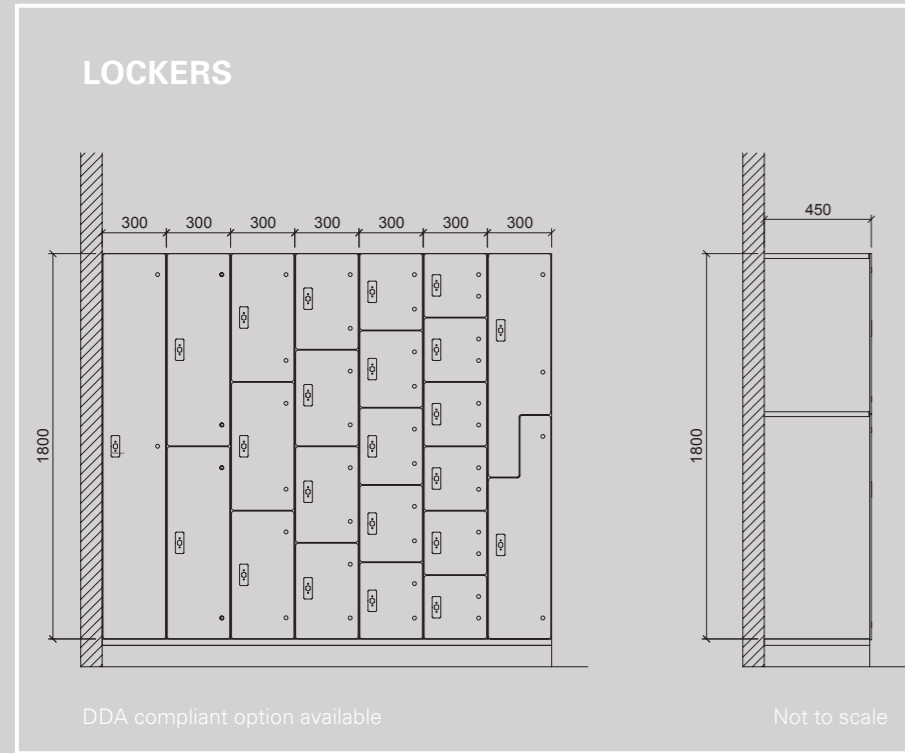
CUBICLES



Icon unit shown, other designs available. Not to scale

TECHNICAL

If planning a job please get in touch to for more detailed information and to use our free CAD service.



surfaces and finishes

All colours are representative - we recommend you ring for a sample before ordering.
Dark solid surface colours not recommended for horizontal applications.

COMPACT GRADE

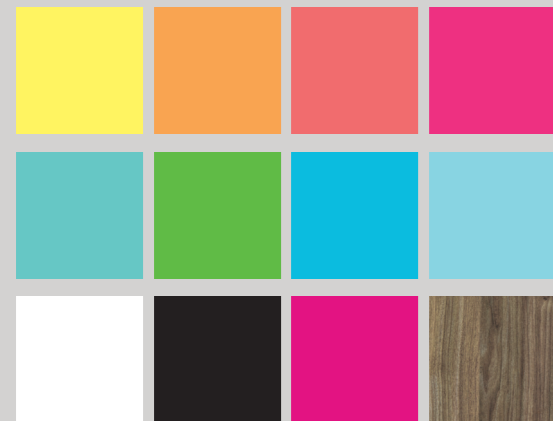
Used in: Cubicle doors, dividers and fascias. Locker doors, vanity tops, panels and modesty screens.



Thickness: 12mm

Construction: Solid core built up from multiple layers of resin-impregnated high quality kraft papers. Each side of the laminate sheet has the same design and surface finish.

Colours: Huge range of solid colours available plus wood grains and other digital prints.



GLASS

Used in: Cubicle doors, dividers and fascias. Locker doors, vanity tops, panels and modesty screens.



Thickness: 10mm and 19mm

Construction: Toughened standard or low iron glass, ceramic back painted on one side, to specified level of obscurity.

Colours: 16 standard colours available.



LAMINATED GLASS

Used in: Cubicle doors, dividers and fascias and modesty screens.



Thickness: 10.76mm

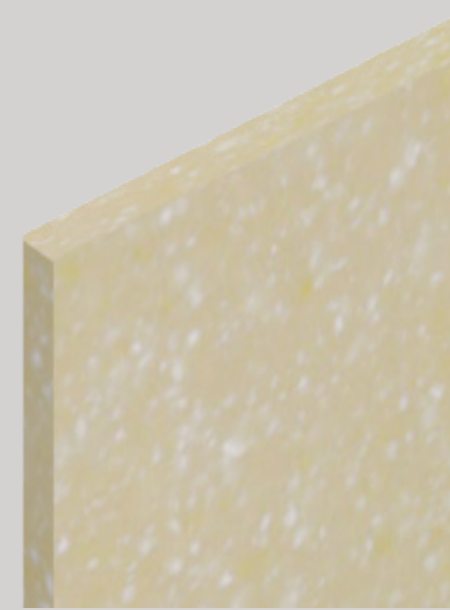
Construction: Two pieces of 5mm toughened standard or low iron glass, with 0.76mm EVA interlayer, to specified level of obscurity.

Colours: 16 standard colours available.



SOLID SURFACE

Used in: Vanity tops.



Thickness: 13mm

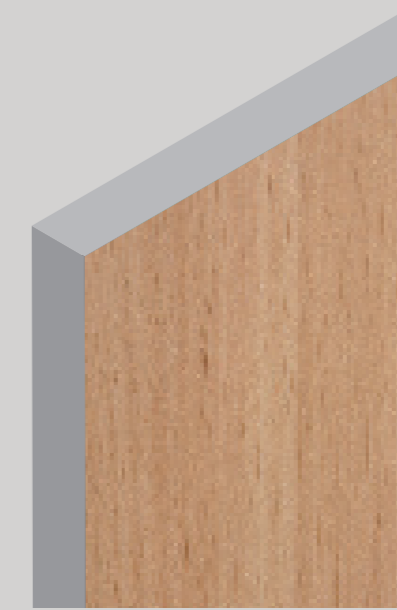
Construction: Manufactured by mixing acrylic resin with powdered bauxite filler and pigments.

Colours: See web for details.



VENEER

Used in: Cubicle doors, dividers and fascias. Locker doors, vanity tops, panels and modesty screens.



Thickness: As specified

Construction: Natural wood veneer bonded onto a solid core.

Colours: See web for details.



NOTES

Individual Design

Thrislington provides a large and diverse range of materials ideal for any washroom world wide. We pride ourselves on delivering a bespoke solution for each and every project, which we call Individual Design. This allows you the creative freedom to design and build your ideal space.

Material Choices

This page is a small flavour of the most common materials used in washroom design. In addition to the surfaces shown, we supply washrooms in high pressure laminate, glass reinforced plastic, aluminium, stainless steel, and like all top Formula 1 teams, carbon fibre too.

Unique Digital Design

We also offer a unique digital design service which allows you to add any design, pattern or logo onto our panels. This is available in both glass, compact grade and high pressure laminate.

Samples

We provide samples free of charge from our offices and we do recommend viewing a sample prior to ordering. We will also provide mood boards and help with colour selection, if required.

Certification

Each of the materials are sourced under the correct technical and environmental certification which allows us to supply projects with both BREEAM and LEED standards around the globe (including the recent Olympic Velodrome and Aquatics Centre).

freestanding, cubicle and panel K32s

CUBICLE & FREESTANDING

Oasis - Glass

Specification: Overall standard cubicle height 2000mm with 150mm floor clearance.

Framework: Full aluminium frame. Extruded satin anodised headrail and vertical posts, with integral full height door closing buffer.

Door: 10mm toughened ceramic back painted glass or 10.76mm toughened laminated glass, to specified level of obscurity. Pivots from headrail encapsulating concealed hydraulic door closer, with anti-finger trap clearance on pivot side and soft close mechanism.

Divider: 10mm toughened ceramic back painted glass or 10.76mm toughened laminated glass, to specified level of obscurity. Supported on engineered 304 grade brushed stainless steel foot.

Fittings: Engineered 303 grade brushed stainless steel lock, with concealed fixing through door, which locates directly into aluminium framework. Incorporating 16mm solid stainless steel bar, with replaceable hard nylon shear tip and emergency release facility. Door fixed to hydraulic closer and stainless steel lower pivot bracket, using engineered brushed stainless steel fittings. Fixed through glass with flush countersunk stainless steel pig-nose machined fixing.

Finishes

Door: 10mm toughened ceramic back painted glass or 10.76mm toughened laminated glass, to specified level of obscurity. Glass available in a range of colours and can be float glass or low-iron.

Divider: 10mm toughened ceramic back painted glass or 10.76mm toughened laminated glass, to specified level of obscurity. Glass available in a range of colours and can be float glass or low-iron.

Fixings: Brushed stainless steel as standard. Polished stainless steel and 316 stainless steel upgrade available upon request.

CUBICLE & FREESTANDING

Oasis - Compact Grade Laminate

Specification: Overall standard cubicle height 2000mm with 150mm floor clearance.

Framework: Full aluminium frame. Extruded satin anodised headrail and vertical posts, with integral full height door closing buffer.

Door: 12mm compact grade laminate, polished on all edges. Pivots from headrail encapsulating concealed hydraulic door closer, with anti-finger trap clearance on pivot side and soft close mechanism.

Divider: 12mm compact grade laminate, polished on all edges. Supported on engineered 304 grade brushed stainless steel foot.

Fittings: Engineered 303 grade brushed stainless steel lock, with concealed fixing through door, which locates directly into aluminium framework. Incorporating 16mm solid stainless steel bar, with replaceable hard nylon shear tip and emergency release facility. Stainless steel coat hook supplied as standard.

Finishes

Door: 12mm compact grade laminate, from standard range.

Divider: 12mm compact grade laminate, from standard range.

Fixings: Brushed stainless steel as standard. Polished stainless steel and 316 stainless steel upgrade available upon request.

CUBICLE & FREESTANDING

Icon - Glass

Specification: Overall standard cubicle height 2000mm with 150mm floor clearance.

Framework: Full aluminium frame. Extruded satin anodized aluminium sections, with integral full height door closing buffer. Lock locates directly into vertical post section.

Door: 10mm toughened ceramic back painted glass or 10.76mm toughened laminated glass, to specified level of obscurity. Supported on engineered anodised aluminium foot, with concealed height adjustment, incorporating sealed bearing, providing self-closing mechanism. Pivots between foot and aluminium head rail, with anti-finger trap clearance on pivot side of door.

Divider: 10mm toughened ceramic back painted glass or 10.76mm toughened laminated glass, to specified level of obscurity. Supported on engineered anodised aluminium foot, with concealed height adjustment.

Fittings: Engineered anodised aluminium lock, with concealed fixing through door, which locates directly into aluminium framework. Incorporating 16mm solid aluminium bar, with replaceable hard nylon shear tip and emergency release facility. Machined aluminium studs. 4mm solid aluminium brackets with flush allen key stainless steel through fixings for wall, door and panel interfaces.

Finishes

Door: 10mm toughened ceramic back painted glass or 10.76mm toughened laminated glass, to specified level of obscurity. Glass available in a range of colours and can be float glass or low-iron.

Divider: 10mm toughened ceramic back painted glass or 10.76mm toughened laminated glass, to specified level of obscurity. Glass available in a range of colours and can be float glass or low-iron.

CUBICLE & FREESTANDING

Icon - Compact Grade Laminate

Specification: Overall standard cubicle height 2000mm with 150mm floor clearance.

Framework: Full aluminium frame. Extruded satin anodised headrail and vertical posts, with integral full height door closing buffer. Lock locates directly into vertical post section.

Door: 12mm compact grade laminate. Supported on engineered satin anodised aluminium foot, with concealed height adjustment, incorporating sealed bearing providing self-closing mechanism. Pivots between foot and aluminium headrail, with anti-finger trap clearance on pivot side of door.

Divider: 12mm compact grade laminate. Supported on engineered satin anodised aluminium foot, with concealed height adjustment.

Fittings: Engineered anodised aluminium lock, with concealed fixing through door, which locates directly into aluminium framework. Incorporating 16mm solid aluminium bar, with replaceable hard nylon shear tip and emergency release facility. Machined aluminium studs. 4mm solid aluminium brackets with flush allen key stainless steel through fixings for wall, door and panel fixings. Satin anodised aluminium coat hook supplied as standard.

Finishes

Door: 12mm compact grade laminate, from standard range.

Divider: 12mm compact grade laminate, from standard range.

CUBICLE & FREESTANDING

Polo - Compact Grade Laminate

Specification: Overall standard cubicle height 2000mm with 150mm floor clearance.

Framework: Full aluminium frame. Extruded powder coated aluminium headrail and vertical posts. Lock locates directly into vertical post section.

Door: 12mm compact grade laminate, polished on all edges, supported on powder coated aluminium foot, incorporating rise and fall closing mechanism. Pivots between foot and aluminium headrail, complete with anti-finger trap clearance on pivot side of door.

Divider: 12mm compact grade laminate, polished on all edges, through fixed into powder coated aluminium foot.

Fittings: Painted aluminium lock, with concealed fixing through door, which locates directly into aluminium framework. Incorporating 16mm aluminium bar, with replaceable hard nylon shear tip and emergency release facility. Extruded aluminium brackets with allen key head through fixings for all wall, door, division and panel fixings. Painted aluminium coat hook, supplied as standard, to match framework colour

Finishes

Aluminium: Dark (RAL 7011) or light (RAL 7035) grey powder coated. Other colours available as optional extra.

Door: 12mm compact grade laminate from standard range.

Divider: 12mm compact grade laminate from standard range.

PANELS

Sentry Panels

Specification: Fully accessible aluminium framed panel system available up to 3000mm high.

Framework: Full pre-fabricated aluminium framework. Extruded vertical aluminium sections, connected by horizontal cross rails and supported by zinc-plated, mild steel adjustable feet.

Access Panels: 3 No panels, 16mm moisture resistant chipboard core, faced with specified high pressure laminate from standard range, edged with matching pvc tape/laminate. Alternatively, vertical edges may be postformed.

Infill Panels: Vertical and head infill panels, 15mm moisture resistant mdf core, faced with specified high pressure laminate from standard range. Skirting to suit appropriate floor finish.

Fittings: Access panels pre-hung on framework on one pair of zinc alloy die cast hinges, secured with one pair of zinc alloy die cast security catches.

Finishes

Access panels: 0.7mm high pressure laminate (square edged or postformed), 12mm compact grade laminate, wood veneer, 6mm ceramic baked glass bonded to a 17mm board, aluminium or stainless steel. All from standard range.

Infill panels: 0.7mm high pressure laminate from standard range.

locker, seating and vanity units N10s

LOCKERS

Fusion Lockers

Specification: Aluminium locker bodies available in a variety of height combinations and widths.

Framework: Aluminium sheet body with rolled radius rear internal corners to reduce dirt traps. Pre drilled holes for on site assembly. Spring loaded hinges, with horizontal and vertical adjustment, locate into extruded aluminium profiles. Base, top and shelf units are manufactured from high impact polycarbonate injection moulding.

Door: 12mm compact grade laminate / 10mm toughened float glass with ceramic paint to inside face. Doors right hand hung as standard. Matching end panels are provided where necessary.

Fittings: Doors attach to hinges with stainless steel screws into either satin anodised aluminium or stainless steel countersunk studs to the outer face of the locker door. Aluminium or stainless steel numbered faceplates complete with pull handle are included. Coat hook in each locker over 900mm high.

Lock: Hasp & Clasp, Standard Camlock, Coin or Card operated and Digital locks are available. Each lock except hasp and clasp is supplied with moulded flexible PVC strap.

Size/Configuration:

Fully bespoke sizes available.
Standard Heights: 900mm / 1500mm / 1700mm / 1800mm / 2.000mm
Standards Widths: 250mm / 300mm / 400mm
Tier: 1, 2, 3, 4, 5 & 6 tier locker configurations are available.

Framework: Mill finished aluminium. SAA and powder coated are available as optional finishes.

Door: 12mm compact grade laminate from standard colour range or 10mm toughened ceramic baked glass in 16 standard colours. All door edges are polished with radiused corners for safety.

SEATING

Disc

Specification: Unique ergonomic cylindrical seating system designed to meet the requirements of high volume changing and wet areas with permanent anchor to floor and choice of six individual shapes (including back support options).

Construction: GRP (Glass Reinforced Plastic) with resin structural support. Fire resistant options available to DIN 5510 and NF F 16101 standards, plus anti-graffiti protection.

Sizes & Tolerances: Standard height 500mm from finished floor.

0 – 50mm (+/- 2mm)
50 – 200mm (+/- 3mm)
200 – 700mm (+/-4mm)
700 – 1000mm (+/-5mm)
1000mm – 2000mm (+10mm)
>2000mm (+/-20mm)

Finishes: Colour choice available upon request.

Anchoring: Direct installation to ground, anchored by M10 fixings. The product can be installed with under-ground heating applications.

SEATING

Slat

Specification: Unique ergonomic collection of seating systems designed to meet the requirements of high volume changing and wet areas with permanent anchor to floor and choice of six contemporary designs.

Construction: 80mm x 20mm stainless steel framework with a 30mm polyethylene seating arrangement with an additional option in extruded aluminium.

Sizes & Tolerances: Standard height of 500mm from finished floor

0 – 50mm (+/- 2mm)
50 – 200mm (+/- 3mm)
200 – 700mm (+/-4mm)
700 – 1000mm (+/-5mm)
1000mm – 2000mm (+10mm)
>2000mm (+/-20mm)

Finishes: Brushed Stainless Steel framework, and polyethylene seating colour choice available upon request. Option of upholstery seating in a range of colours available upon request.

Anchoring: Direct installation to ground anchored by M8 fixings. The product can be installed with under-ground heating applications.

SEATING

Bench

Specification: Ergonomic collection of traditional bench seating systems to meet the requirements of high volume changing areas with permanent anchor to floor (adjustable feet to accommodate sloping floors).

Construction: Mild steel framework with either compact grade laminate or hardwood seating arrangement in either slab design, or slat choices.

Sizes & Tolerances: Standard height of 500mm from finished floor. (DDA compliant sizes available upon request).

0 – 50mm (+/- 1mm)
50 – 200mm (+/- 2mm)
200 – 700mm (+/-3mm)
700 – 1000mm (+/-4mm)
1000mm – 2000mm (+5mm)
>2000mm (+/-10mm)

Finishes: Metal brackets and frames with polyester powder coating (colour choice from standard RAL charts). Seating available from compact grade laminate selector chart and standard hardwood effect.

Anchoring: Direct installation to ground/wall, anchored by M8 fixings. The product can be installed with under-ground heating applications and can be supplied with bracket options for floor, cantilever, island frames, and locker support frames with integral seats.

VANITY UNITS

Trough - Solid Surface

Specification: Vanity unit with solid surface top.

Top: 13mm solid surface from standard range of colours, with 18mm moisture resistant mdf substrate. Sited 870mm from finished floor level, 500mm deep with profiled 100mm thermoformed recess and integrated wastes. Solid surface splashback 150mm tall to finish flush with rear of trough.

Support Framework: Cantilevered galvanised steel support arms connected to 2.5mm thick full length channel sub frame, fixed to existing structure, using appropriate fixings.

Framework: Full pre-fabricated aluminium framework. Extruded vertical aluminium sections, connected by horizontal cross rails and supported by zinc-plated, mild steel adjustable feet.

Access Panels: 1 no. 12mm compact grade laminate panel polished on all edges. Pre-hung on framework on one pair of zinc alloy die cast hinges, secured with one pair of zinc alloy die cast security catches.

Infill Panels: Vertical and head infill panels, 15mm moisture resistant mdf core, faced with specified high pressure laminate from standard range. Skirting to suit appropriate floor finish.

Finishes

Top: Solid surface from standard colour range.

Panel: 12mm Compact Grade Laminate from standard colour range.

Vertical Infill: 0.7mm HP Laminate from standard colour range.

VANITY UNITS

Slab - Glass

Specification: Prefabricated glass vanity unit complete with basin.

Core Material: 19mm toughened glass with protective etched finish to underside.

Framework: Choice of cantilevered support arm or bespoke 10mm plate stainless steel bracket.

Basin: Kiln fused glass basin integral to the vanity top with protective etched finish to underside.

Slab - Concrete

Specification: Prefabricated concrete vanity unit complete with basin.

Core Material: Prefabricated concrete.

Framework: Choice of cantilevered support arm or bespoke 10mm plate stainless steel bracket.

DDA REGULATIONS

All products are fully compliant with current DDA regulations.

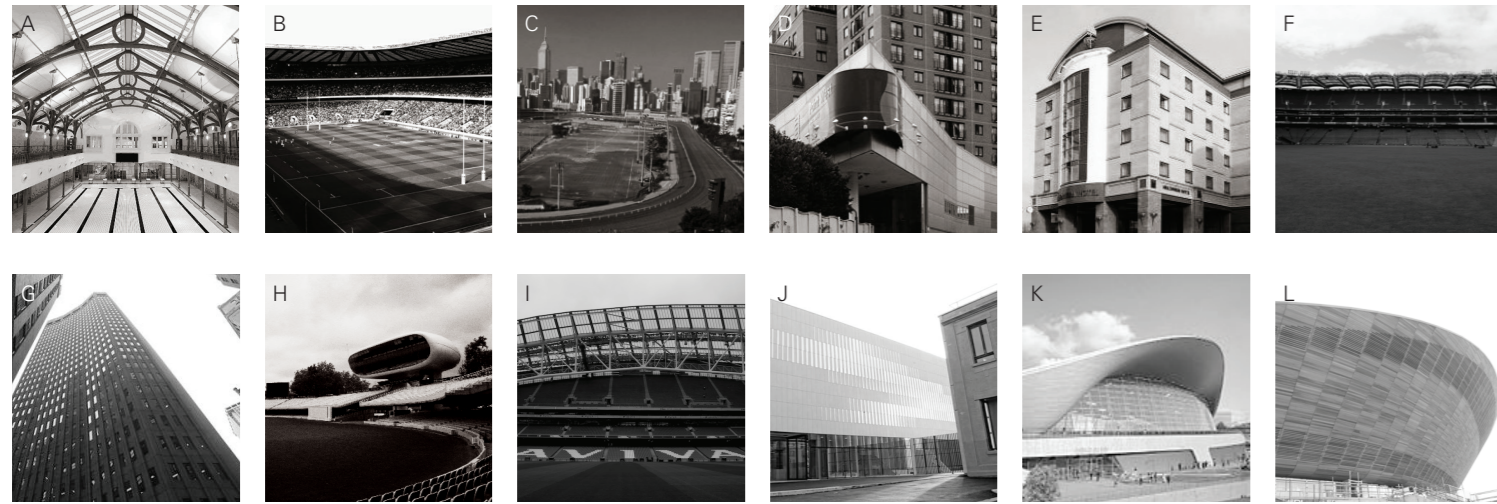
Fusion lockers are available with open bottom section to allow wheelchair access, with faceplates incorporating Braille.

All cubicles and freestanding units can be taken up to 1800mm wide with open outward doors.

50 YEARS OF NOT JUST PLAYING AROUND

Despite only just launching our dedicated Leisure range, we have been successfully installing our cubicles in the world's best leisure centres and arenas since we launched our award winning cubicle systems 50 years ago.

Here is a sample of just a few of our jobs.



- A Holmes Place Leisure, 1989
- B Twickenham, 1992
- C Hong Kong Jockey Club, 1995
- D David Lloyd Leisure, 1999
- E Chelsea FC Leisure, 2001
- F Croke Park, 2004
- G Goldman Sachs Private Gym, 2006
- H Lord's Cricket Ground, 2008
- I Aviva Stadium, Dublin, 2010
- J Centre Sportif, Paris, 2011
- K London Aquatics Centre, 2012
- L Olympic Velodrome, 2012

Thrislington Cubicles Limited
 Prince William Avenue
 Sandycroft
 Flintshire
 CH5 2QZ
 t +44 1244 520 677
 f +44 1244 535 670
 www.thrislingtonleisure.com

Brochure designed by Fin
 www.finstudio.co.uk

Imagery by TigerX
 www.tigerx.co.uk

Printed in the UK by DXG Media
 www.dxg.co.uk



Thrislington Hong Kong
 702-5, Yen Sheng Centre
 64 Hoi Yuen Road
 Kwun Tong
 Kowloon
 Hong Kong

t: +852 2960 7755
 e: hongkong@thrislingtoncubicles.com

Thrislington USA
 38 Third Ave 100W
 Charlestown Navy Yard
 Boston, MA. 02129
 USA

t: +1 617 681 6700
 e: usa@thrislingtoncubicles.com

Thrislington Qatar
 Ain Khalid
 Salwa Road,
 Ibn Mahmoud, Al Dar Arch 41
 P.O. Box # 22155
 Doha
 Qatar

t: +974 4442 9946
 e: qatar@thrislingtoncubicles.com

Thrislington Nigeria
 Aries Block, Ground Floor,
 Eleganza Plaza,
 Apapa
 Lagos
 Nigeria

t: +234 1462 3844
 e: nigeria@thrislingtoncubicles.com

Thrislington KSA
 PO Box 15049
 Jeddah 21444
 Saudi Arabia

t: +966 2653 1507
 e: ksa@thrislingtoncubicles.com

Thrislington Ireland
 24 Tolka Valley Business Park
 Glasnevin
 Dublin 11
 Eire

t: +353 1853 2222
 e: ireland@thrislingtoncubicles.com



reddot design award